

CONTACT US TODAY:

Andrea Hauger

847-706-7153

ahauger@owenwagener.com

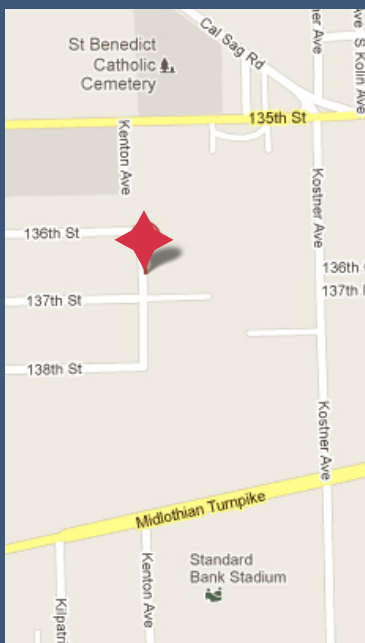
Owen Wagener & Co.

941 N. Plum Grove Rd., Suite B

Schaumburg, IL 60173

www.owenwagener.com

MULTI-TENANT INDUSTRIAL



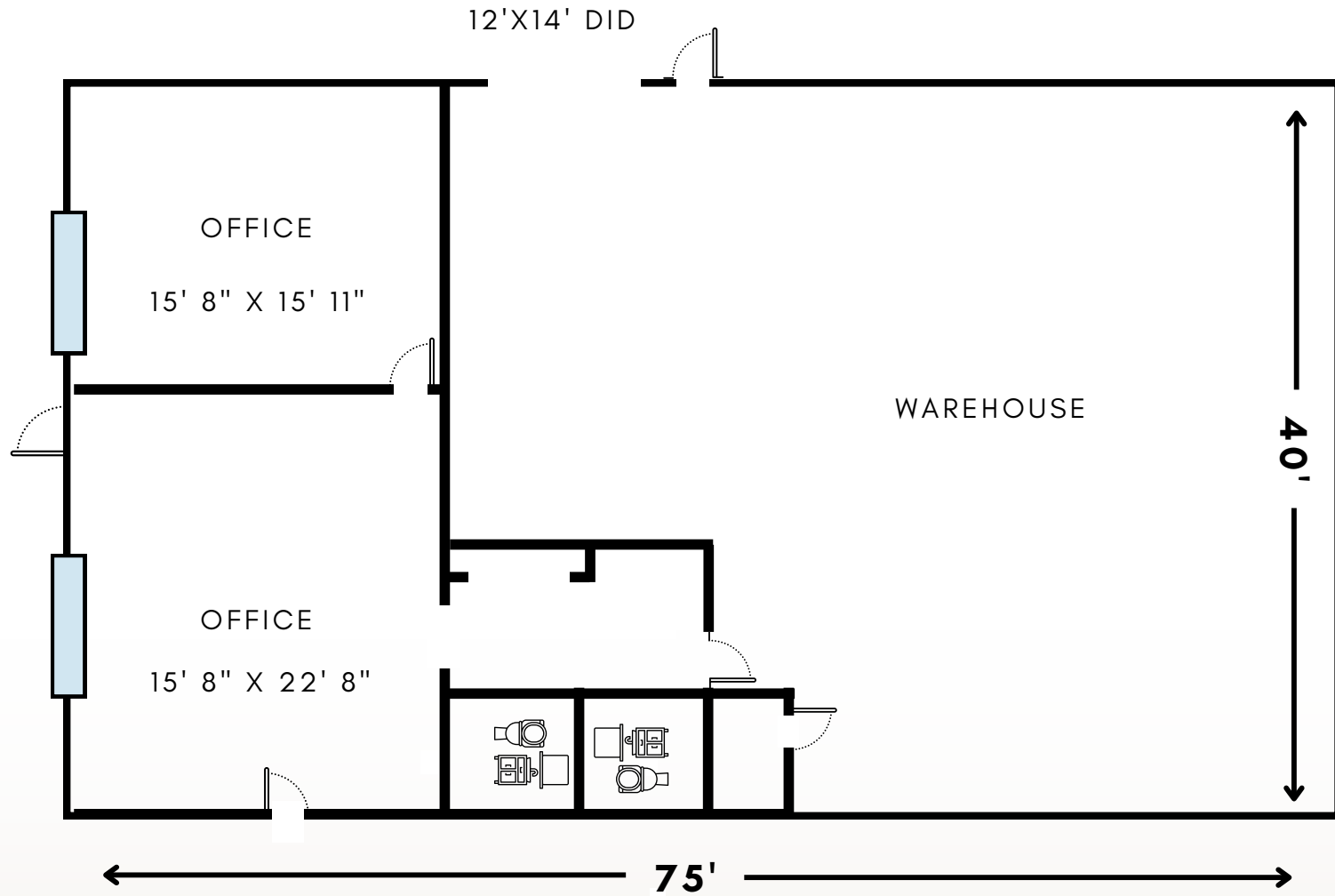
SPECS:

- AIR & WATER LINES IN PLACE
- 12' X 14' DRIVE-IN DOOR
- 100% AIR CONDITIONED
- GREAT SMALL MFG SPACE
- MINUTES TO I-294 OFF CICERO

Space Available:	3,000 SF
Land Area:	43,560 SF
Total Building Size:	12,750 SF
Office Size:	650 SF
Description:	Industrial
Ceiling Height:	15' Clear
Parking:	4 Car
Loading:	One Drive-in Door (12' x 14')
Year Built:	1972
Zoning:	I-1
Heat:	Gas Forced Air
Power:	200 Amps/ 3 Phase
Monthly Rent:	Subject to Offer

All information herein is from sources reliable but not guaranteed accurate. Subject to errors, omissions, and to changes of price and terms, prior sale or lease, all without notice.

FLOOR PLAN



13651
S KENTON RD
CRESTWOOD, IL

3,000 SF
Total

