



COMMERCIAL REAL ESTATE
SPECIALIST



FOR LEASE

935 N PLUM GROVE ROAD, SUITE G
SCHAUMBURG, IL 60173

CONTACT US TODAY:

Eric Wagener

847-706-7155

ewagener@owenwagener.com

Owen Wagener & Co.

941 N. Plum Grove Rd., Suite B

Schaumburg, IL 60173

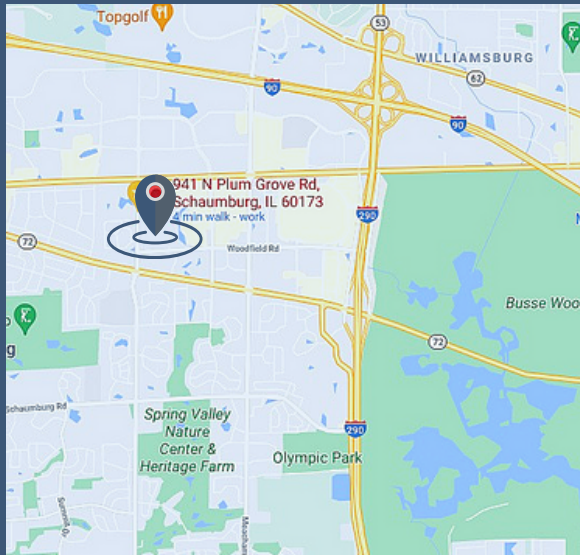
www.owenwagener.com



SINGLE-STORY OFFICE BUILDING

SPECS:

- PRIME OFFICE IN PROFESSIONAL BUSINESS PARK
- 2 PRIVATE OFFICES
- MINUTES TO I-90 & RT. 53 INTERCHANGE
- EXCELLENT NATURAL LIGHT
- BEAUTIFULLY LANDSCAPED OFFICE PARK
- KITCHENETTE WITH SINK

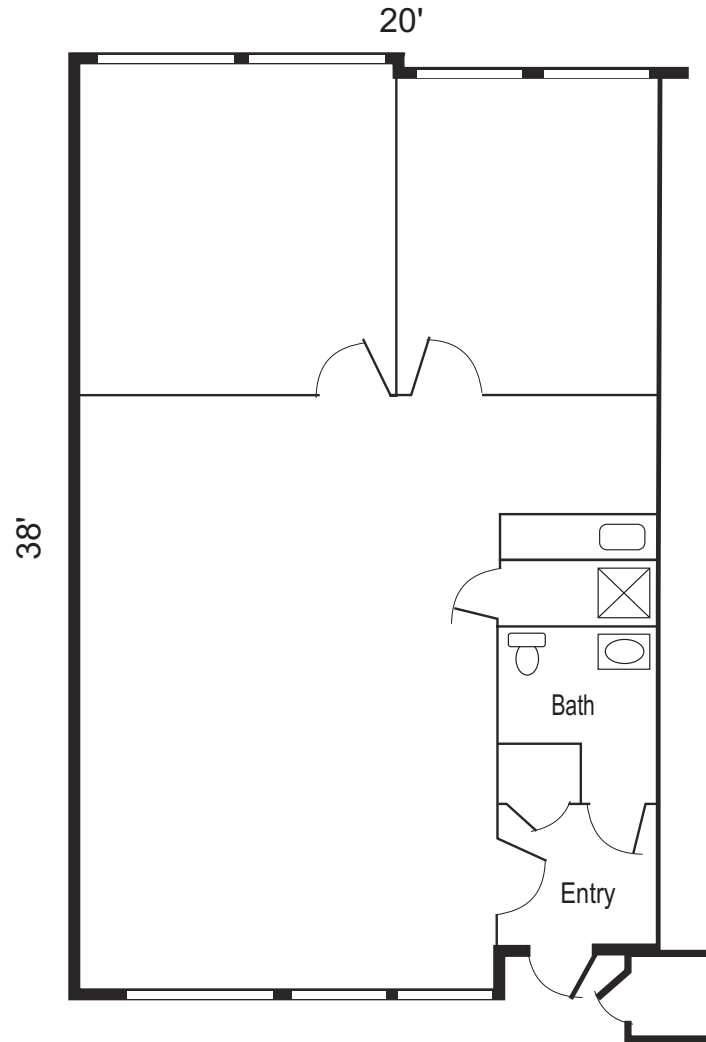


Space Available:	855 SF
Total Building Size:	5,295 SF
Description:	Premium Office Unit
Parking:	Ample
Year Built	1984
Heat:	Gas Forced Air & AC
Monthly Rent:	\$1,069.00 Per Month (\$15/SF) Gross
Taxes:	Included
Operating Expenses:	Included

All information herein is from sources deemed reliable but not guaranteed accurate. Subject to errors, omissions, and to changes of price and terms, prior sale or lease, all without notice.

935 N PLUM GROVE RD., SUITE G
SCHAUMBURG, IL 60173

855 SF



YOUR CHICAGOLAND COMMERCIAL
REAL ESTATE EXPERT, SINCE 1964.