



COMMERCIAL REAL ESTATE  
SPECIALIST



# FOR LEASE

915 N PLUM GROVE ROAD, SUITE B  
SCHAUMBURG, IL

CONTACT US TODAY:

**Andrea Hauger**

847-706-7153

ahauger@owenwagener.com

Owen Wagener & Co.

941 N. Plum Grove Rd., Suite B

Schaumburg, IL 60173

www.owenwagener.com

## SINGLE-STORY OFFICE



### SPECS:

- ONE PRIVATE OFFICE
- SMALL KITCHENETTE
- OFFICE SPACE IN THE HEART OF SCHAUMBURG
- EXTENSIVE WINDOW LINE
- MINUTES TO I-90 & RT. 53 INTERCHANGE
- BEAUTIFULLY LANDSCAPED OFFICE PARK

**Total Building Size:** 5,295 SF

**Space Available:** 783 SF

**Year Built:** 1985

**Description:** Premium Office Space

**Parking:** Ample

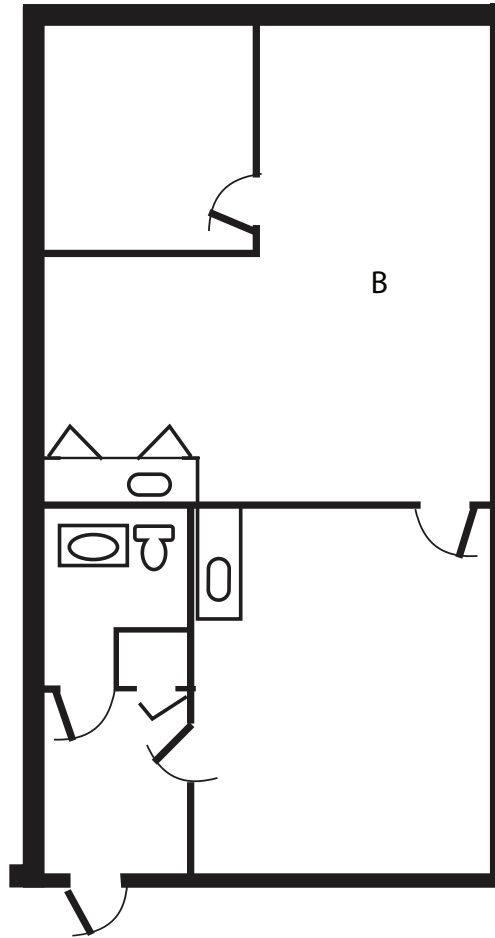
**Heat:** Gas Forced Air, A/C

**Monthly Rent:** \$978.00 Modified Gross (\$15.00/SF)

All information herein is from sources reliable but not guaranteed accurate. Subject to errors, omissions, and to changes of price and terms, prior sale or lease, all without notice.

915 N PLUM GROVE ROAD, SUITE B  
SCHAUMBURG, IL

783 SF



YOUR CHICAGOLAND COMMERCIAL  
REAL ESTATE EXPERT, SINCE 1964.

[WWW.OWENWAGENER.COM](http://WWW.OWENWAGENER.COM)